

Ras(G13A)

Catalog Number: 26191

Gene Symbol: H-Ras; K-Ras; N-Ras

Description: Anti-HRAS (G13A) Mouse Monoclonal Antibody

Background: Belongs to the small GTPase superfamily. Ras family binds GDP/GTP and possess intrinsic GTPase activity, alternate between an inactive form bound to GDP and an active form bound to GTP. Activated by a guanine nucleotide-exchange factor (GEF) and inactivated by a GTPase-activating protein (GAP). Located in cell membrane, lipid-anchor, cytoplasmic side and Golgi apparatus membrane.

Immunogen: A synthetic peptide from the internal region of HRas which includes the mutation of G13A, human origin.

Tested Applications: ELISA, WB, IHC

Recommended Dilutions:

ELISA: 1:1000-1:5000

WB: 1:500-1:1000

IHC: 1:50-1:100

Concentration: 1 mg/ml

Host: Mouse

Clonality: Monoclonal

Purity: Purified from ascites

Format: Liquid

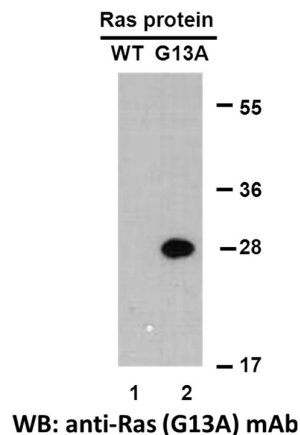
Preservative: No

Constituents: PBS (without Mg^{2+} and Ca^{2+}), pH 7.4, 150 mM NaCl, 50% glycerol

Species Reactivity: Recognizes G13A mutant, but not wild-type H-RAS of vertebrates.

Storage Conditions: Store at $-20^{\circ}C$. Avoid freeze / thaw cycles.

Western blot:

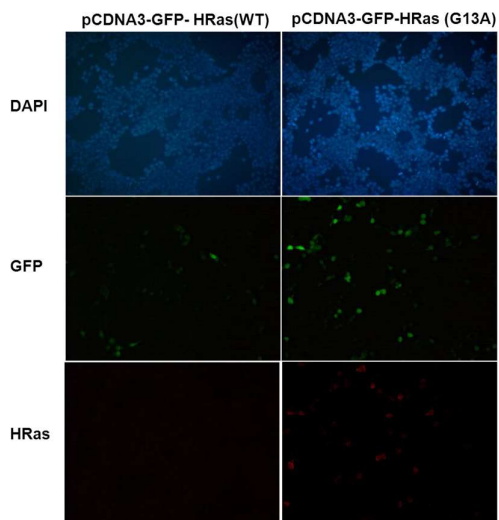


Western blot analysis of recombinant HRas(G13A) and wild type proteins.

Purified His-tagged HRas(G13A) protein (lane 2) and corresponding wildtype protein (lane 1) were blotted with anti-HRas (G13A) monoclonal antibody (Cat. # 26191).

FOR RESEARCH USE ONLY. NOT FOR DIAGNOSTIC APPLICATIONS

Immunofluorescence:



Immunofluorescence of cells expressing Ras proteins with anti-HRas (G13A) antibody.

HEK293T cells were transfected with pCDNA3-GFP-HRas (WT) plasmid (left column) or pCDNA3-GFP-HRas (G13A) plasmid (right column), then fixed and stained with anti-HRas(G13A) monoclonal antibody (Cat. # 26191).

FOR RESEARCH USE ONLY. NOT FOR DIAGNOSTIC APPLICATIONS